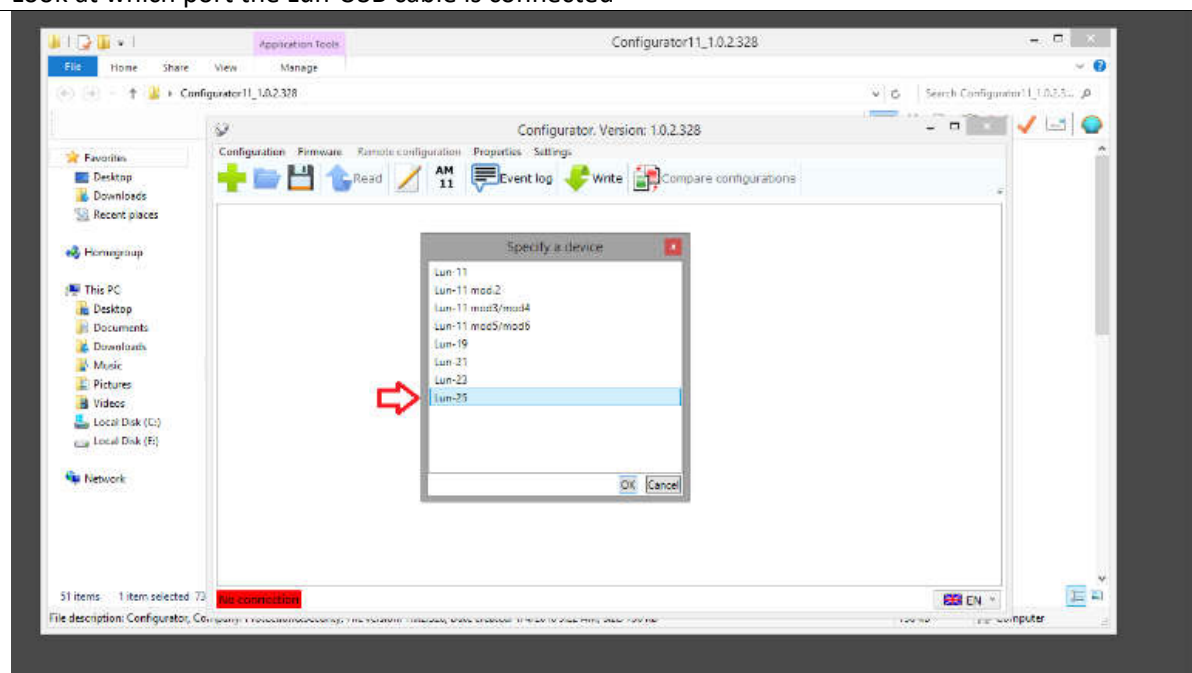
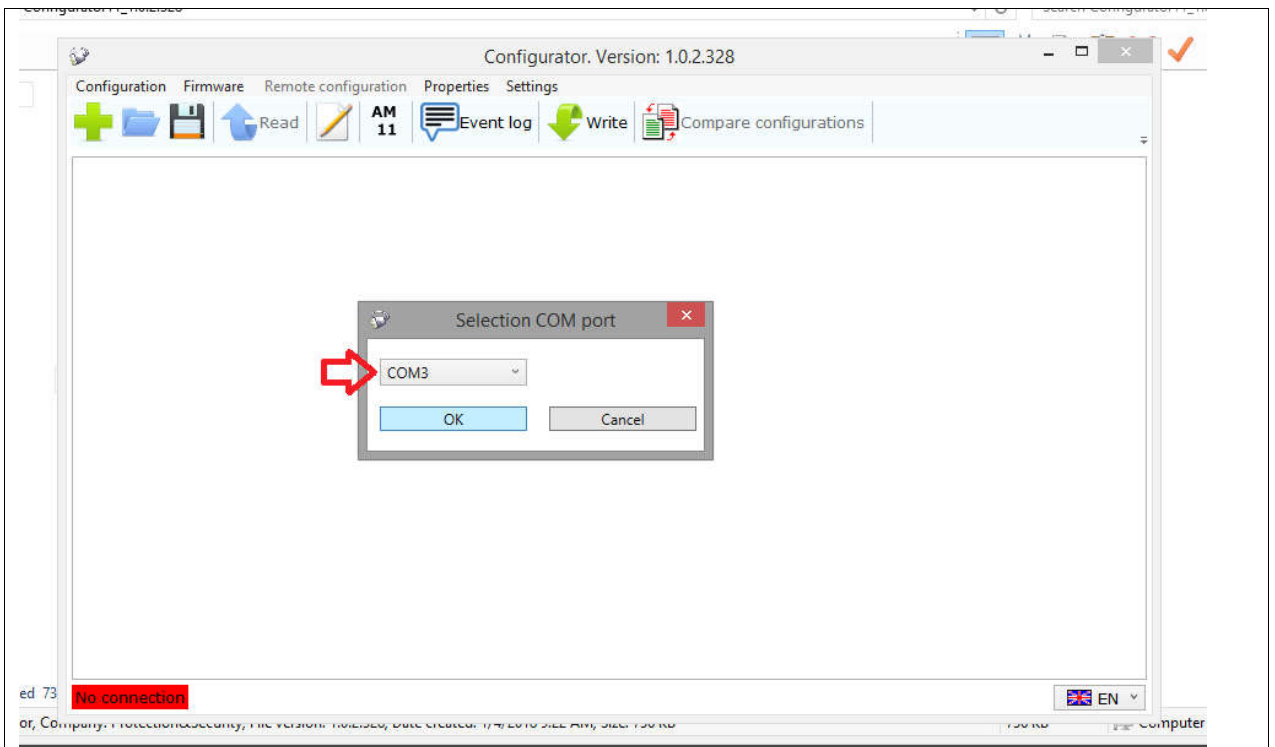


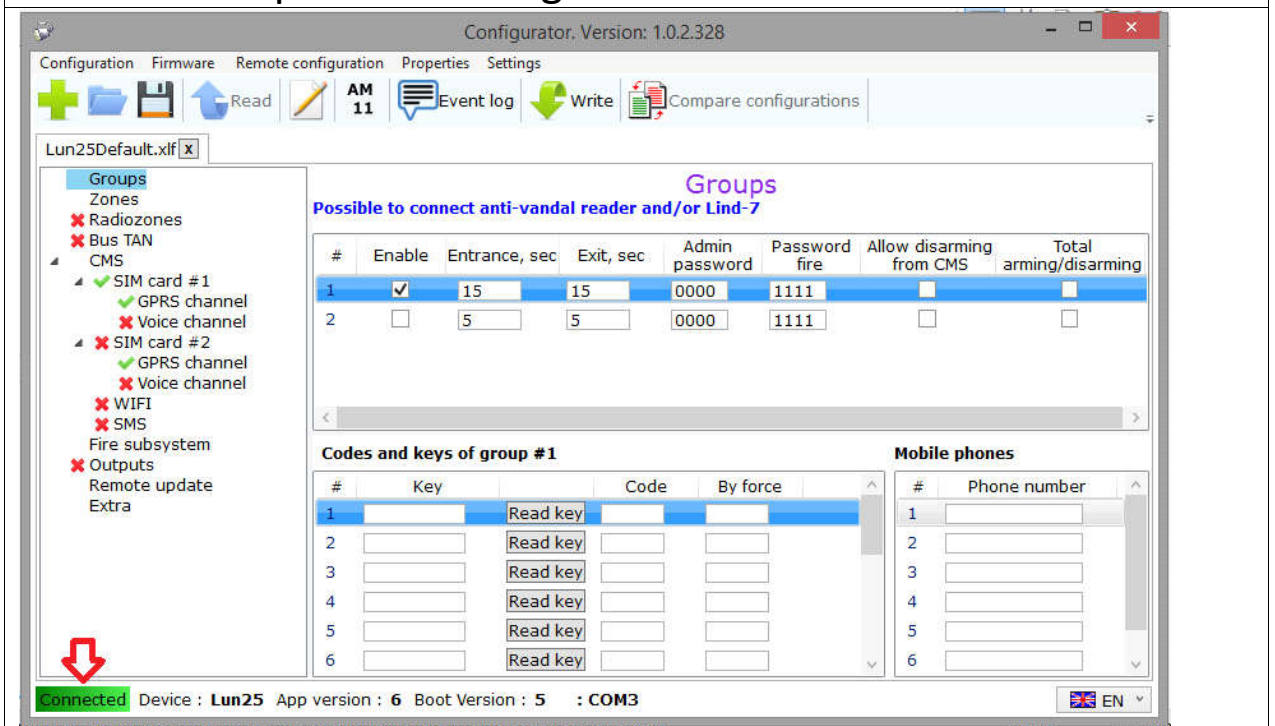
Look at which port the Lun-USB cable is connected



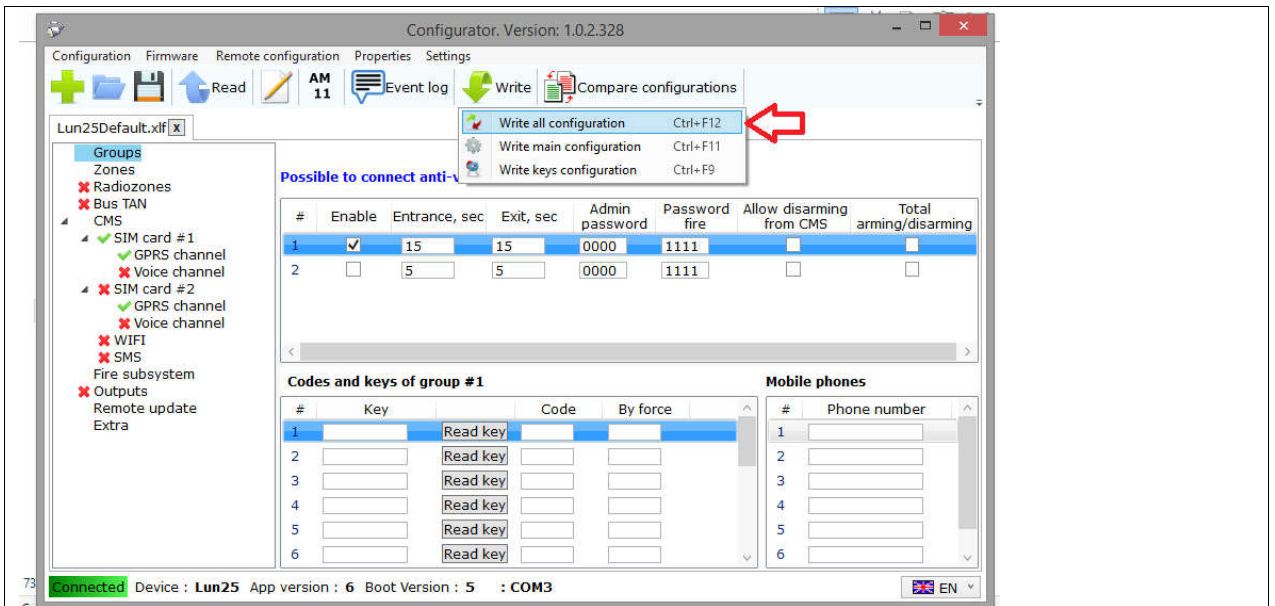
Start the configurator and select the device from the list



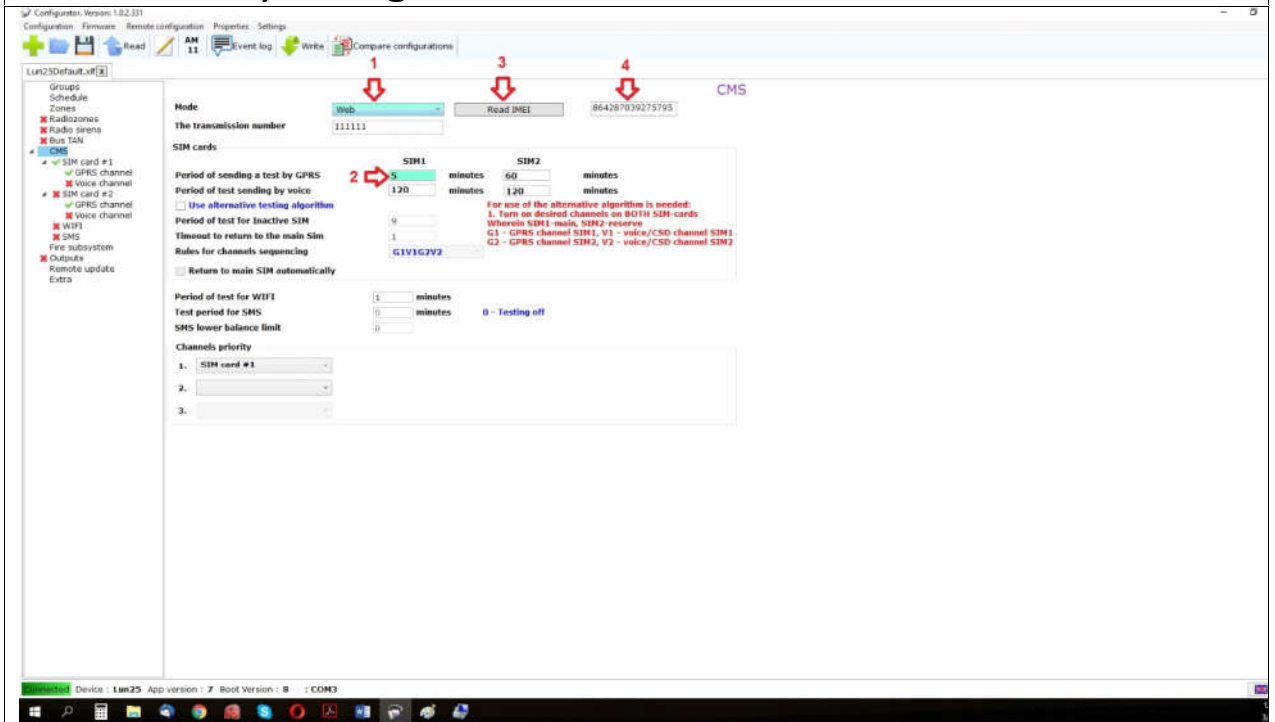
Select which port the configurator will work with



Power the control panel. In the lower left corner, a connection indicator will light up green.



Write factory configuration



- Specify the type of security server: WEB
 - Indicate the testing period in minutes, for example 5 minutes.
 - Press read the IMEI key
 - enter IMEI during panel setup on the website <http://lun.ortus.io>
- See the figure below.



Main



Devices



Zones



Users



Events

Panel

Panel info

Panel ID: 3836

IMEI: 864287039275795

Type: Lun-25

Device
timezone: (UTC) Coordinated Universal Time

Description:



Channels

	Enable	Test period	Phone number
SIM 1:	<input type="checkbox"/>	01:15	+ <input type="text"/>
SIM 2:	<input type="checkbox"/>	01:15	+ <input type="text"/>
Ethernet:	<input type="checkbox"/>	01:00	

Previous

Next

Finish

Configurator, Version: 1.0.2.328

Configuration Firmware Remote configuration Properties Settings

Read AM 11 Event log Write Compare configurations

Lun25Default.xlf

Groups

- Zones
- Radiozones
- Bus TAN
- CMS
 - SIM card #1
 - GPRS channel
 - Voice channel
 - SIM card #2
 - GPRS channel
 - Voice channel
 - WIFI
 - SMS
 - Fire subsystem
 - Outputs
 - Remote update
 - Extra

Possible to connect anti-vandal reader and/or Lind-7

#	Enable	Entrance, sec	Exit, sec	Admin password	Password fire	Allow disarming from CMS	Total arming/disarming
1	<input checked="" type="checkbox"/>	15	15	0000	1111	<input checked="" type="checkbox"/>	<input type="checkbox"/>
2	<input type="checkbox"/>	5	5	0000	1111	<input type="checkbox"/>	<input type="checkbox"/>

Codes and keys of group #1

#	Key	Code	By force
1	Read key		
2	Read key		
3	Read key		
4	Read key		
5	Read key		
6	Read key		
7	Read key		
8	Read key		
9	Read key		

Mobile phones

#	Phone number
1	
2	
3	
4	
5	
6	
7	

Connected Device : Lun25 App version : 6 Boot Version : 5 : COM3

Enable the option to allow the device to be disarmed remotely (from a central console, mobile application, etc.)

Configurator, Version: 1.0.2.328

Configuration Firmware Remote configuration Properties Settings

Read AM 11 Event log Write Compare configurations

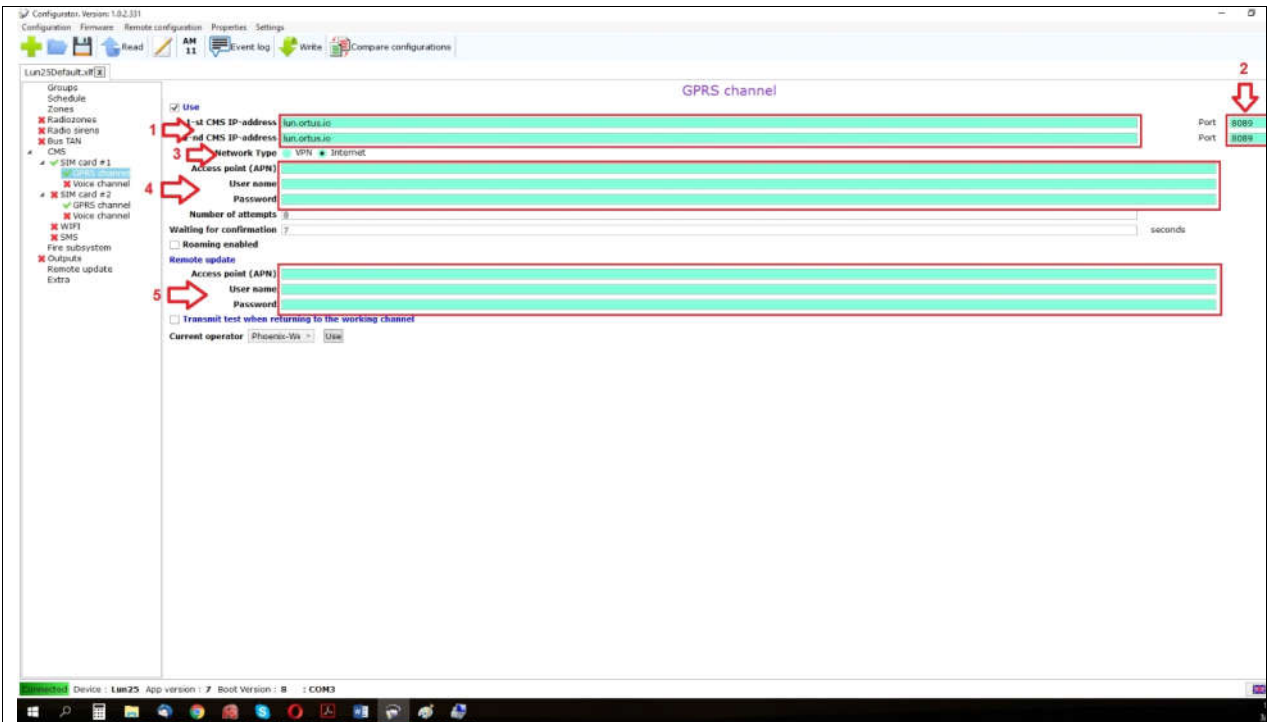
Lun25Default.xlf

Zones

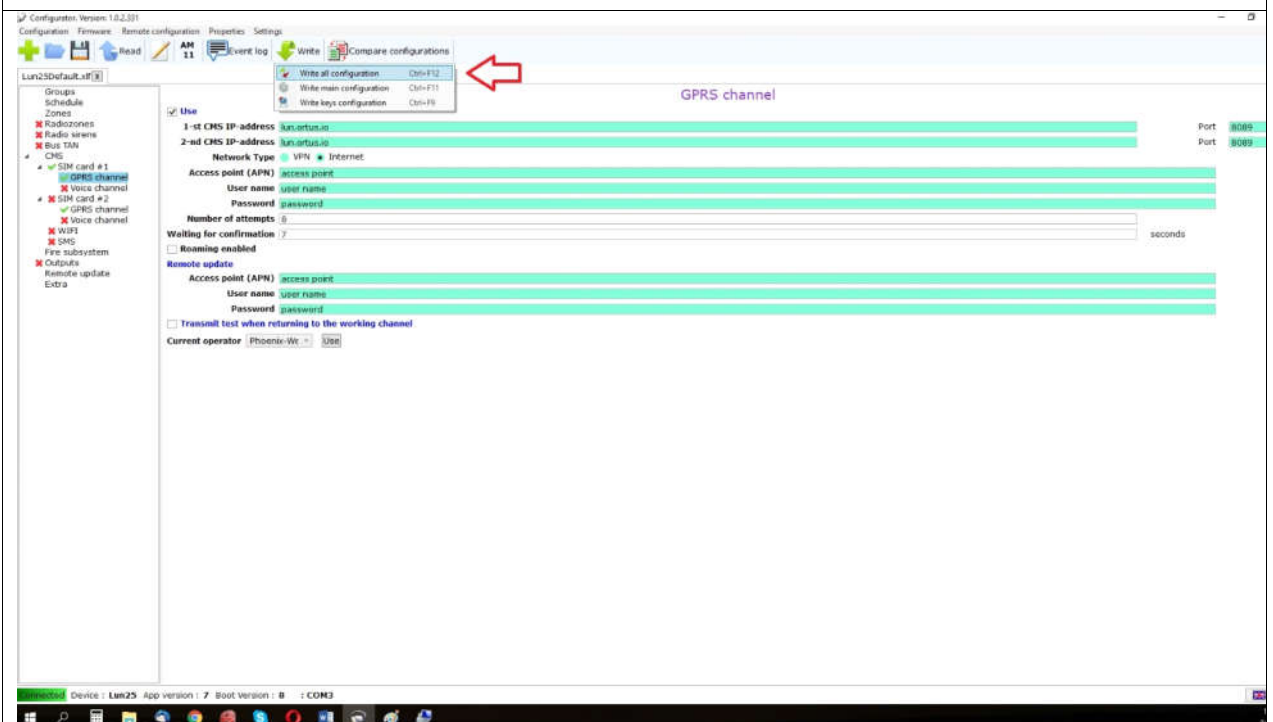
#	Zone type	Silent Bypass	Group	Line type	Zone
1	1 - Instant	<input type="checkbox"/>	1	Terminal resistor alarm by break ans short circuit	
2	1 - Instant	<input type="checkbox"/>	1	Terminal resistor alarm by break ans short circuit	
3	1 - Instant	<input type="checkbox"/>	1	Terminal resistor alarm by break ans short circuit	
4	1 - Instant	<input type="checkbox"/>	1	Terminal resistor alarm by break ans short circuit	
5	1 - Instant	<input type="checkbox"/>	1	Terminal resistor alarm by break ans short circuit	

Connected Device : Lun25 App version : 6 Boot Version : 5 : COM3

Set the type of zone, for example, instant security zone



- Specify the server address -> lun.ortus.io
- Specify server port -> 8089
- Specify the connection type -> Internet
- Specify the mobile operator's access point, login, password (if required)



Write the configuration to the device.